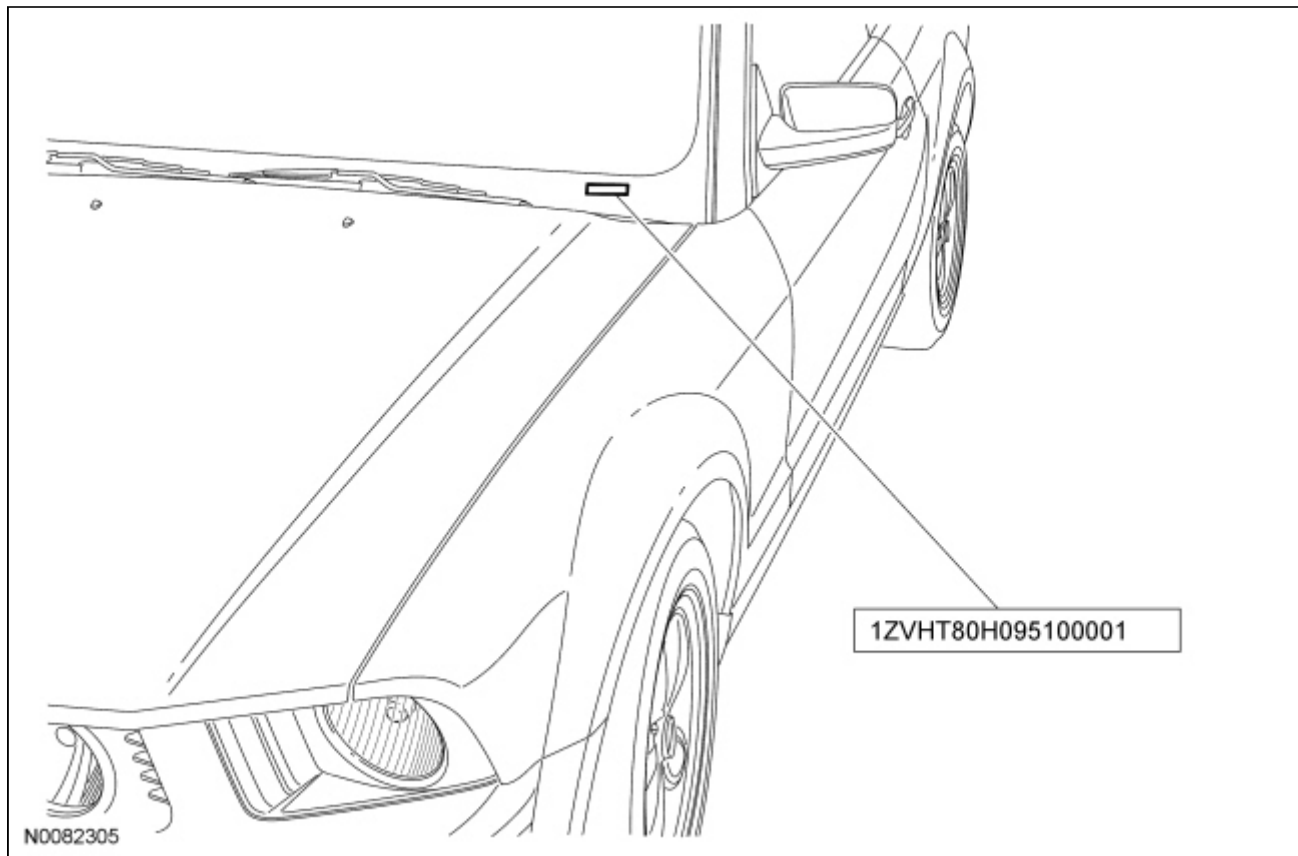


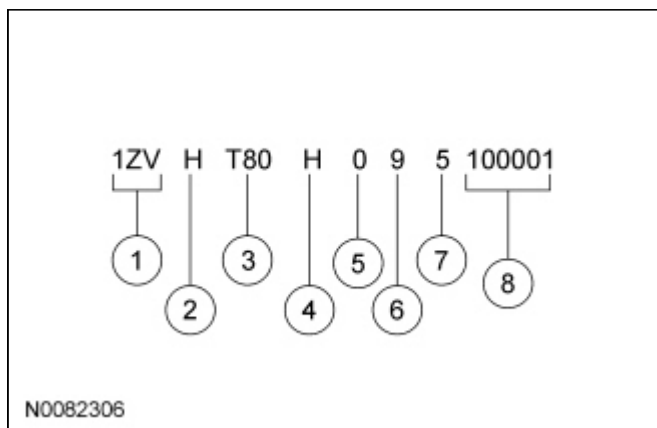
## Identification Codes

### Vehicle Identification Number (VIN) Locator



The Vehicle Identification Number (VIN) is a 17-digit alphanumeric code. The VIN is stamped on a metal tab riveted to the instrument panel, top upper left of the dash. The VIN number is also found on the Vehicle Certification (VC) label.

If the VIN plate requires replacement, authorized dealers must contact their respective regional office.

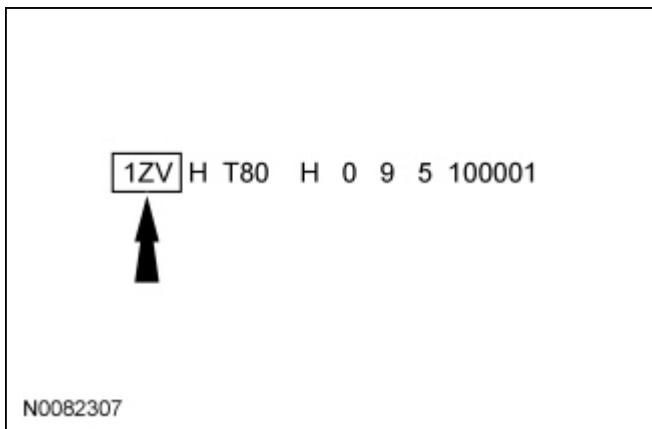


Item	Description
------	-------------

1	World Manufacturer Identifier (WMI)
2	Restraint-type code
3	Line and series
4	Engine code
5	Computer-generated check digit
6	Model year code
7	Assembly plant code
8	Production sequence number

## Vehicle Identification Number (VIN)

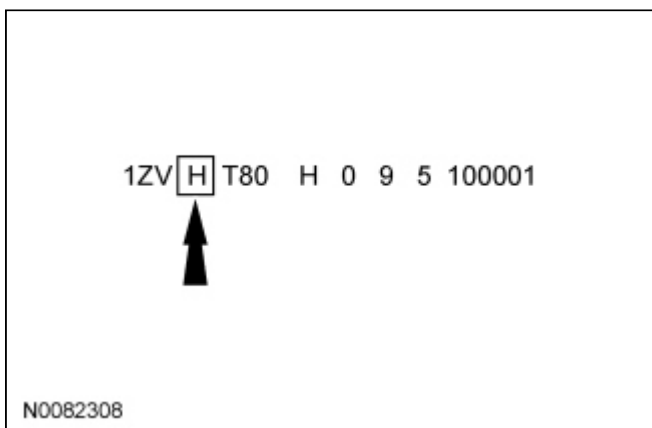
### World Manufacturer Identifier (WMI)



The first 3 **VIN** positions are the World Manufacturer Identifier (WMI).

- 1ZV — Ford, USA, passenger car

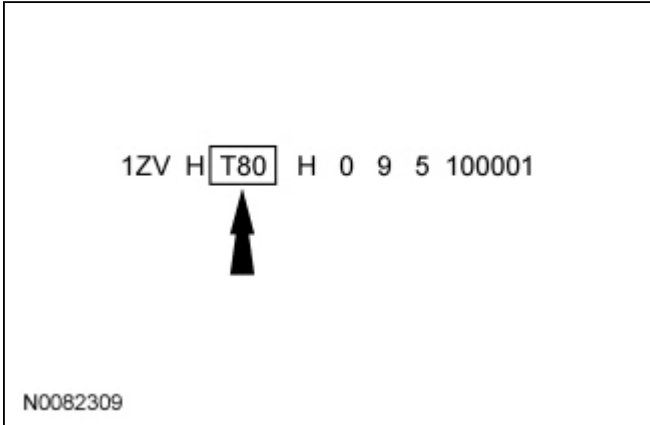
### Restraint-Type Code



The fourth **VIN** position is the vehicle restraint system type code.

- H — Active safety belts, all positions — driver and front passenger air bags with side impact air bags

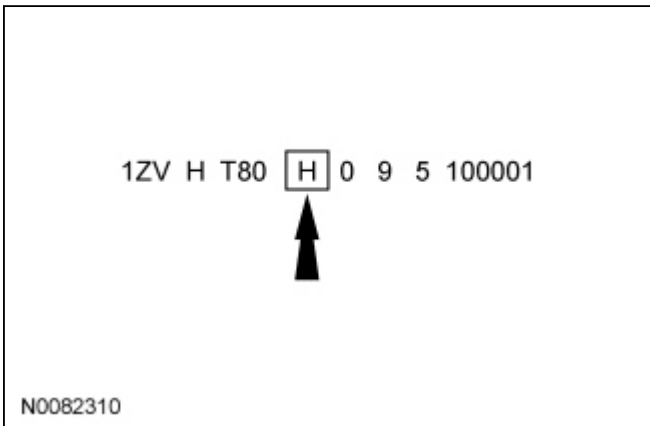
## Line and Series Code



Positions 5 through 7 indicate vehicle line, series and body type.

- T80 — 2-door coupe, base
- T82 — 2-door coupe, GT
- T84 — 2-door convertible, base
- T85 — 2-door convertible, GT
- T88 — 2-door coupe, GT500
- T89 — 2-door convertible, GT500

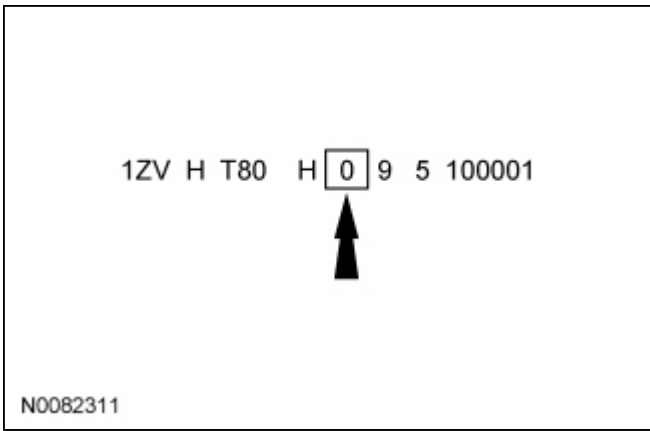
## Engine Code



The eighth VIN position is the engine displacement and number of cylinders code.

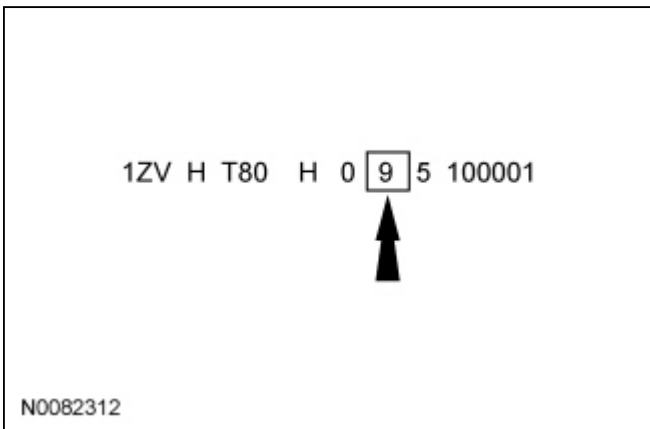
- H — 4.6L, OHC, 3-valve, electronic fuel injection, 8-cylinder
- N — 4.0L, SOHC, electronic fuel injection, 6-cylinder
- S — 5.4L, DOHC, 4-valve, electronic fuel injection, supercharged, 8-cylinder

## Computer-Generated Check Digit



The ninth VIN position is a government-assigned, computer-generated check digit code (0-9).

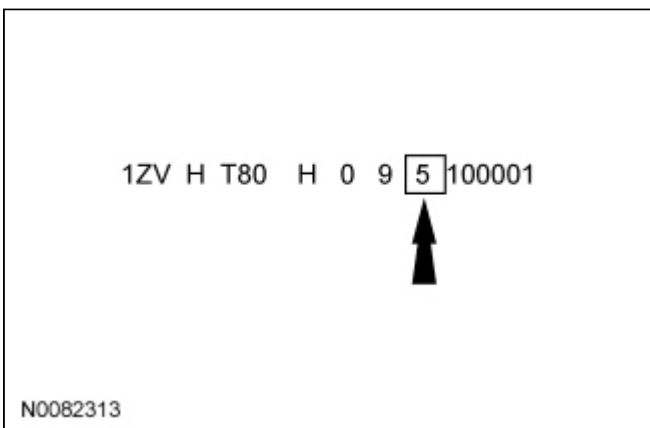
### Model Year Code



The tenth VIN position is the model year code.

- 9 — 2009

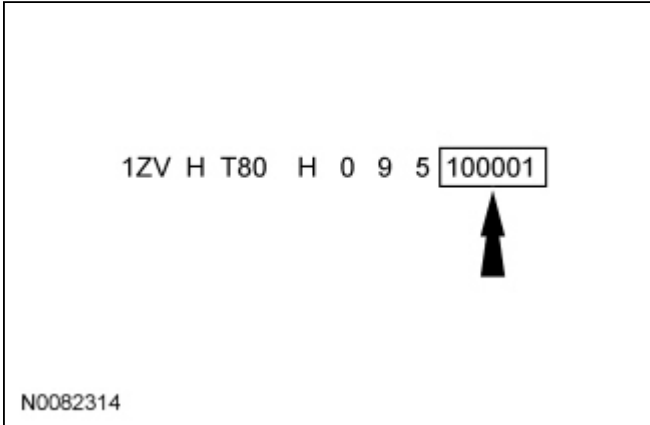
### Assembly Plant Code



The eleventh VIN position is the assembly plant code.

- 5 — Auto Alliance International (AAI) — Flat Rock, Michigan (USA)

## Production Sequence Number



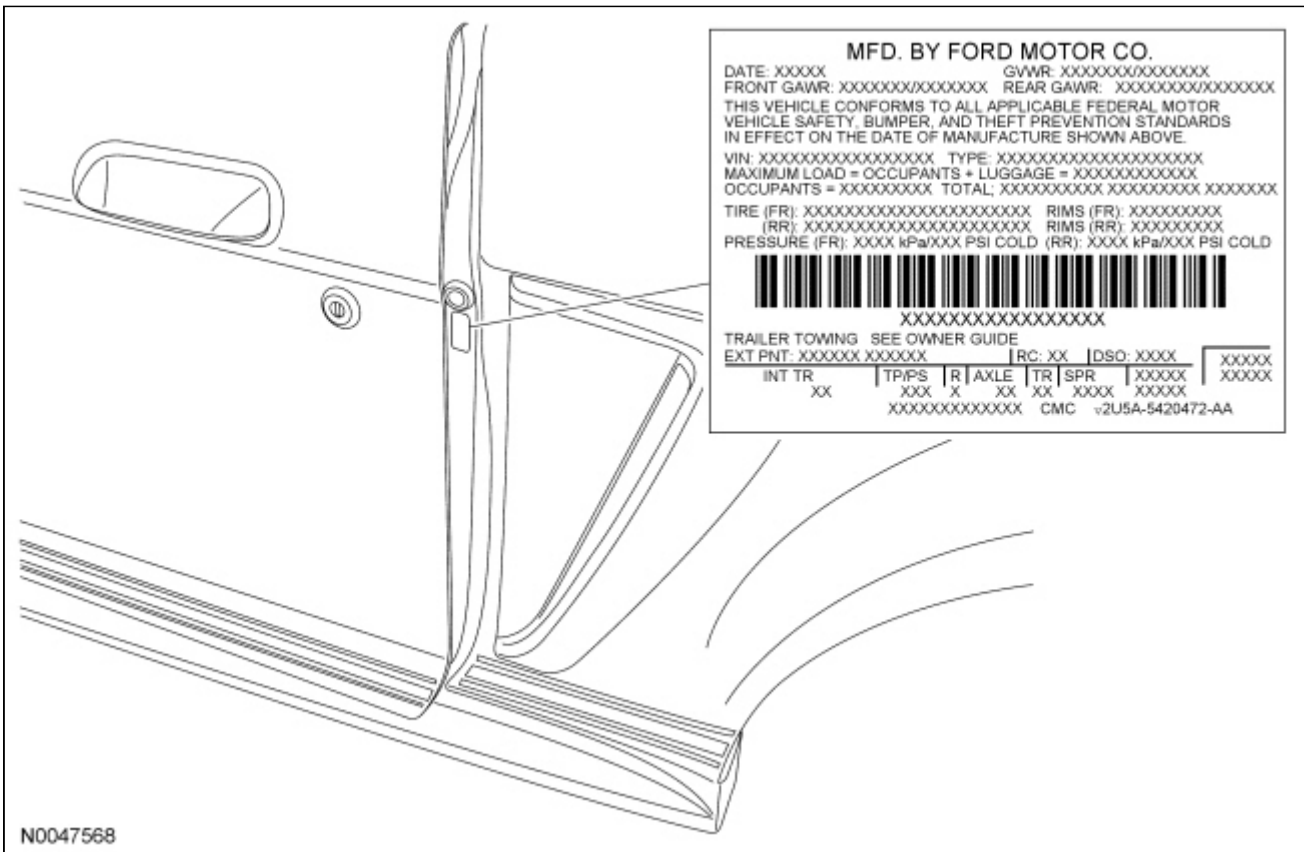
The last 6 VIN positions are the production sequence number. This number is also used as the vehicle serial and warranty number.

The serial number can also be found on the engine block and transmission.

- 100001-599999

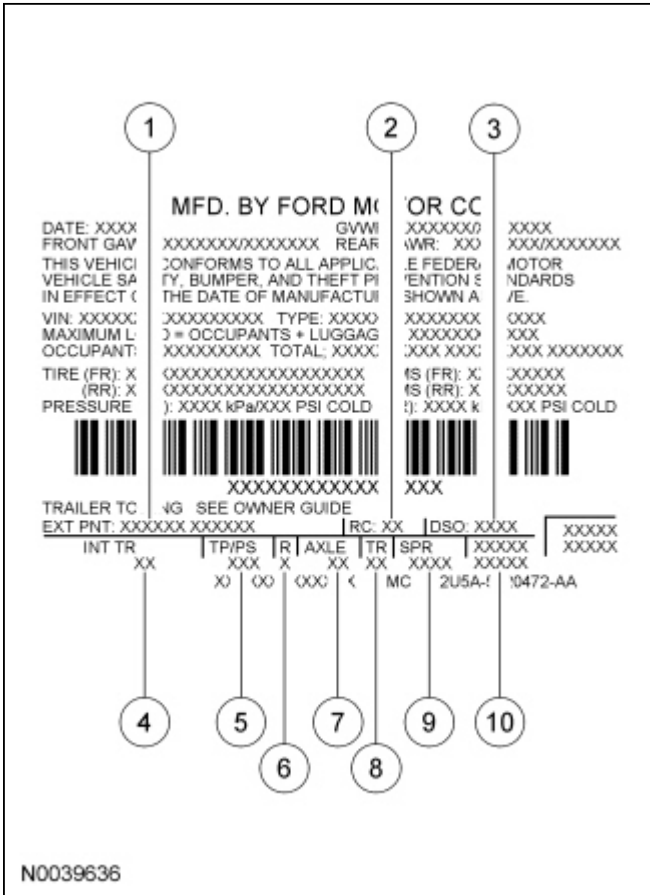
## Vehicle Certification (VC) Label

### Vehicle Certification (VC) Label Locator



The upper portion of the Vehicle Certification (VC) label contains the manufacturer name, the month and year of manufacture, the certification statement and the Vehicle Identification Number (VIN). It also includes Gross Vehicle Weight Rating (GVWR). The [VC](#) label is located on the LH door jamb.

If a vehicle requires replacement of the [VC](#) label and is 4 years old or less, an authorized dealer must submit the [VIN](#) to their respective regional office. The regional office will submit a web form to the assembly plant for the replacement label. Once the label has been printed, a representative from the regional office will deliver the label to the dealer and witness installation on the vehicle. If a vehicle is more than 4 years old and requires a replacement label, the dealer must submit a request to the Department of Motor Vehicles.



Item	Description
1	Exterior paint color code
2	Region code
3	Special order code District Special Order (DSO) FSO — foreign special order PTO — paint, tire option special order
4	Interior trim code
5	Tape/paint stripe code
6	Radio type code
7	Axle ratio code
8	Transmission code
9	Spring code

## Paint Codes

MFD. BY FORD MOTOR CO.	
DATE: XXXXX	GVWR: XXXXXXX/XXXXXXXX
FRONT GAWR: XXXXXXX/XXXXXXXX	REAR GAWR: XXXXXXX/XXXXXXXX
THIS VEHICLE CONFORMS TO ALL APPLICABLE FEDERAL MOTOR VEHICLE SAFETY, BUMPER, AND THEFT PREVENTION STANDARDS IN EFFECT ON THE DATE OF MANUFACTURE SHOWN ABOVE.	
VIN: XXXXXXXXXXXXXXXXXXXX	TYPE: XXXXXXXXXXXXXXXXXXXX
MAXIMUM LOAD = OCCUPANTS + LUGGAGE = XXXXXXXXXXXXXXX	
OCCUPANTS = XXXXXXXXXX TOTAL: XXXXXXXXXXX XXXXXXXXXX XXXXXXXX	
TIRE (FR): XXXXXXXXXXXXXXXXXXXX	RIMS (FR): XXXXXXXXXX
(RR): XXXXXXXXXXXXXXXXXXXX	RIMS (RR): XXXXXXXXXX
PRESSURE (FR): XXXX kPa/XXX PSI COLD (RR): XXXX kPa/XXX PSI COLD	
XXXXXXXXXXXXXXXXXXXX	
TRAILER TOWING SEE OWNER GUIDE	
EXT PNT: XXXXXX XXXXXX	RC: XX   DSO: XXXX
INT TR XX	TP/PS   R   AXLE   TR   SPR   XXXXX   XXXXX
	XXX X XX XX XXXX XXXXX
XXXXXXXXXXXXXXXXXXXX CMC v2U5A-5420472-AA	
N0039637	

Paint codes may be listed as a 2-part code. The first set of paint code letters/numbers listed indicate the vehicle primary body color. The second set of paint code letters/numbers listed (if applicable) indicate a 2-tone or accent body color. All colors are base coat/clear coat.

- D3 — Torch Red
- G5 — Alloy Gray
- G9 — Vista Blue
- HP — Performance White
- JV — Dark Candy Apply Red
- PX — Highland Green (Bullitt)
- U3 — Grabber Orange
- UA — Black
- UI — Brilliant Silver Metallic
- ZY — Vapor Silver

## Interior Trim Codes

MFD. BY FORD MOTOR CO.	
DATE: XXXXX	GVWR: XXXXXXX/XXXXXXXX
FRONT GAWR: XXXXXXX/XXXXXXXX	REAR GAWR: XXXXXXX/XXXXXXXX
THIS VEHICLE CONFORMS TO ALL APPLICABLE FEDERAL MOTOR VEHICLE SAFETY, BUMPER, AND THEFT PREVENTION STANDARDS IN EFFECT ON THE DATE OF MANUFACTURE SHOWN ABOVE.	
VIN: XXXXXXXXXXXXXXXXXXXX	TYPE: XXXXXXXXXXXXXXXXXXXX
MAXIMUM LOAD = OCCUPANTS + LUGGAGE = XXXXXXXXXXXXXXX	
OCCUPANTS = XXXXXXXXXX TOTAL: XXXXXXXXXXX XXXXXXXXXX XXXXXXXX	
TIRE (FR): XXXXXXXXXXXXXXXXXXXX	RIMS (FR): XXXXXXXXXX
(RR): XXXXXXXXXXXXXXXXXXXX	RIMS (RR): XXXXXXXXXX
PRESSURE (FR): XXXX kPa/XXX PSI COLD (RR): XXXX kPa/XXX PSI COLD	
XXXXXXXXXXXXXXXXXXXX	
TRAILER TOWING SEE OWNER GUIDE	
EXT PNT: X	RC: XX   DSO: XXXX
INT TR XX	TP/PS   R   AXLE   TR   SPR   XXXXX   XXXXX
	XXX X XX XX XXXX XXXXX
XXXXXXXXXXXXXXXXXXXX CMC v2U5A-5420472-AA	
N0039638	

The interior trim codes are listed as a 2-part code. The first character listed is the interior fabric. The second character listed is the interior color.

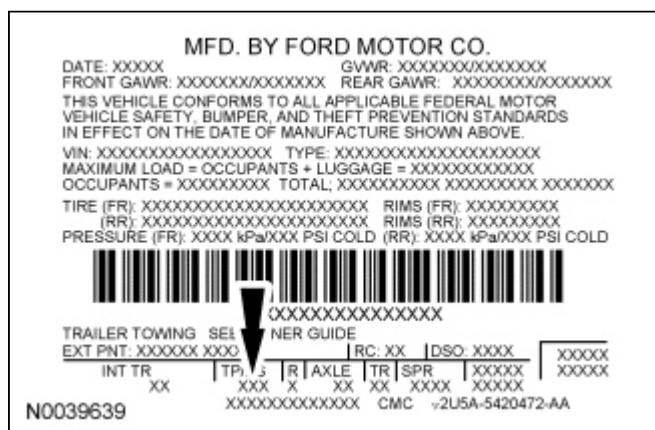
- 5 — Cloth seats with logo — GT

- G — No grain mini perforation — GT500
- J — Verona leather seats — Base
- K — Nudo/Aberdeen leather seats — GT
- N — Mustang Sally leather with stitching
- P — Cloth seats — Base

The interior trim colors are:

- 2 — Medium Dove Gray
- 4 — Charcoal Black/Chamois
- C — Charcoal Black/Camel
- D — Charcoal Black/Medium Dove Gray
- H — Camel Tan
- R — Charcoal Black/Crimson Red
- W — Charcoal Black

### Tape/Paint Stripe Codes

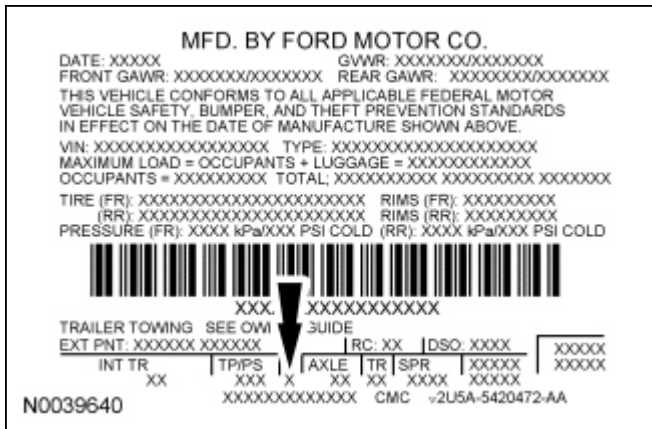


The tape and paint stripe codes are:

- 1 — Black
- 2 — Oxford White
- 3 — Light Pearl Gold
- 4 — Performance White
- 7 — Satin Silver
- 8 — Vista Blue
- A — Alloy Gray
- E — Ebony
- P — Pink
- X — Satin Black

### Radio Codes

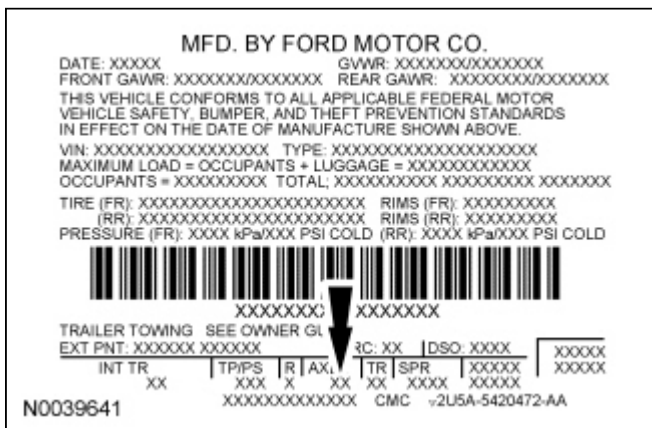




The radio type codes are:

- 5 — Premium electronic AM/FM stereo with CD player and clock
- 9 — CDX6+, AM/FM stereo with 6-disc CD changer and speed-sensing volume control
- X — AM/FM stereo with 6-disc CD changer and navigation system

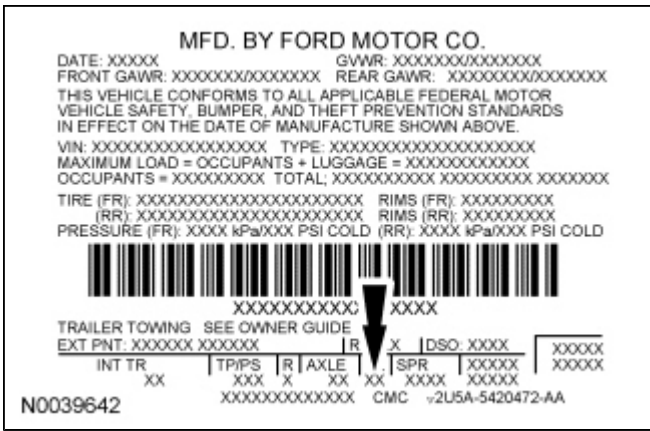
### Axle Ratio Codes



The axle ratios are:

- BG — 3.31 — non-limited slip, base vehicle with manual or automatic transmission
- CB — 3.73 — limited slip, Bullitt
- CD — 3.55 — limited slip, GT with manual transmission
- CG — 3.31 — limited slip, GT with automatic transmission

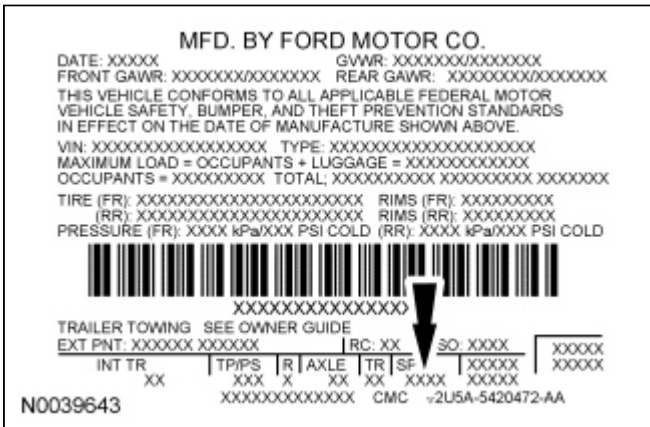
### Transmission Codes



The transmission codes are:

- E — 6-speed manual (T56) — GT500
- F — 5-speed manual (T5OD/TR3150) — Base
- K — 5-speed manual (TR3650) — GT
- L — 5-speed automatic (5R55S) — Base/GT

**Spring Codes**



The spring code portion of the VC label identifies both the front and rear springs. The first set of characters listed indicate the front spring code. The second set of characters indicate the rear spring code.

**Front Springs**

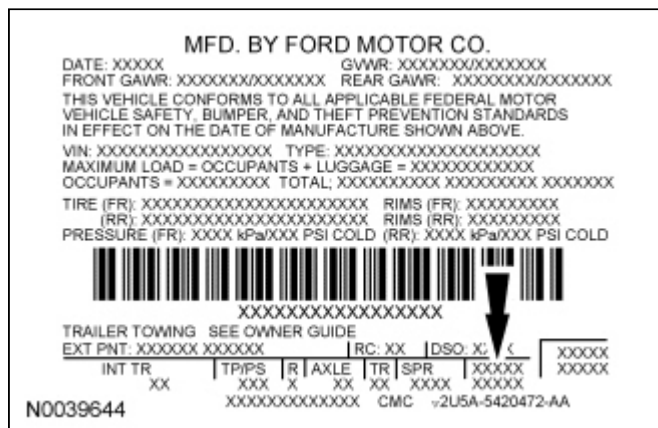
- AA — 6R33-5310-AA
- BB — 6R33-5310-BA
- CC — 6R33-5310-CA
- DD — 6R33-5310-DA
- FF — 6R33-5310-FA
- GG — 6R33-5310-GA
- JJ — 7R3V-5B450-CA, GT500
- KK — 7R3V-5B450-DA, GT500

**Rear Springs**

- AA — 5R33-5560-AC
- BB — 5R33-5560-BC
- CC — 5R33-5560-CC
- DD — 5R33-5560-DC

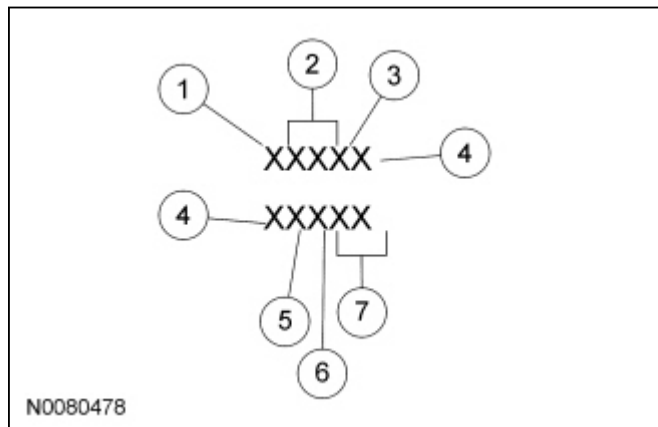
- EE — 5R33-5560-ED
- FF — 5R33-5560-FB
- GG — 5R33-5560-GB
- HH — 5R33-5560-HB
- JJ — 9R3V-5560-JA, GT500
- KK — 7R3V-5560-KB, GT500
- LL — 9R3V-5560-LA, GT500
- MM — 7R3V-5560-MA, GT500

**Powertrain Calibration Information**



**NOTE:** Powertrain calibration information is limited to a maximum of 5 characters per line on the Vehicle Certification (VC) label. Because of this, calibration identification consisting of more than 5 characters will wrap to the second line on the VC label.

Powertrain calibration information is printed in the lower right corner of the VC label. Only the base calibration information is printed. Revision levels will not appear, however, this information can be obtained through a scan tool using the most current software revision.



Item	Description
1	Model year (model year in which calibration strategy was first introduced)
2	Vehicle code
3	Transmission code
4	Unique calibration (designates different hardware to similar vehicles). Example: tires, drive ratios, etc.
5	Fleet code (describes fleet to which the vehicle belongs). Example: 6 - Evaporative Emission (EVAP)

6	Certification region (lead region where multiple regions are included in one calibration). Example: A - US federal
7	Revision level (will advance as revisions occur). Not printed on label

**Model Year**

- Y — 2000
- 1 — 2001
- 2 — 2002
- 3 — 2003
- 4 — 2004
- 5 — 2005
- 6 — 2006
- 7 — 2007
- 8 — 2008
- 9 — 2009

**Vehicle Line**

- ZF — Mustang

**Transmission**

- 1 — Automatic transmission
- 2 — Manual transmission

**Unique Calibration**

The Emissions/CAFE/CO2 Compliance Department is responsible for assigning these calibration numbers. Unique calibration identifications are assigned to cover similar vehicles to differentiate tires, drive configurations, final drive ratios and other calibration-significant factors.

These 2 characters are chosen by the analyst to provide easily identifiable information unique to each calibration. For example, using the number 2 to denote a 2-valve engine versus using the number 4 to denote a 4-valve engine.

**Fleet Code**

- 1 — HDGE/Dyno
- 2 — Fast AMA, US
- 3 — A.D.P., U.S.
- 4 — Not assigned
- 5 — Not assigned
- 6 — Evaporative Emission (EVAP)
- 7 — M.A.C.A.A.
- 8 — On-Board Diagnostic (OBD)
- 9 — Not assigned

**Certification Region**

- 5 — US 50 states
- A — US federal, including altitude, may include Canada and/or Mexico
- B — US California standard, includes US green states
- C — Canada
- D — China
- E — European Community (Austria, Belgium, Denmark, Finland, France, Germany, Greece, Ireland, Italy, Luxembourg, Netherlands, Portugal, Spain, Sweden and United Kingdom)
- F — Extended European Community (E plus Croatia, Czech Republic, Estonia, Hungary, Norway, Poland, Romania, Russian Federation, Slovakia, Slovenia, Switzerland and Yugoslavia)
- G — Gulf Cooperative Council (Bahrain, Kuwait, Oman, Qatar, Saudi Arabia and UAE)

- H — Hong Kong
- J — Japan
- K — Korea
- L — Malaysia
- M — Mexico
- N — New Zealand
- P — Australia
- Q — South America (Brazil)
- S — Singapore
- T — Taiwan
- U — South America (unleaded fuel regions)
- V — Vietnam
- X — Rest Of World (ROW)
- Y — Military
- Z — Israel

**Revision Level (not printed on label)**

- 91-99 — Hardware certification levels
  - 01-04 — Preliminary levels
  - 00 — Job 1 production (initial certification)
  - 05-09 — Pre-job 1 revisions to calibrations
  - 10-89 — Post-job 1 revisions to calibrations
  - 0B — Durability test level
  - BD — On-Board Diagnostic (OBD) intermediate level (pre-05)
-